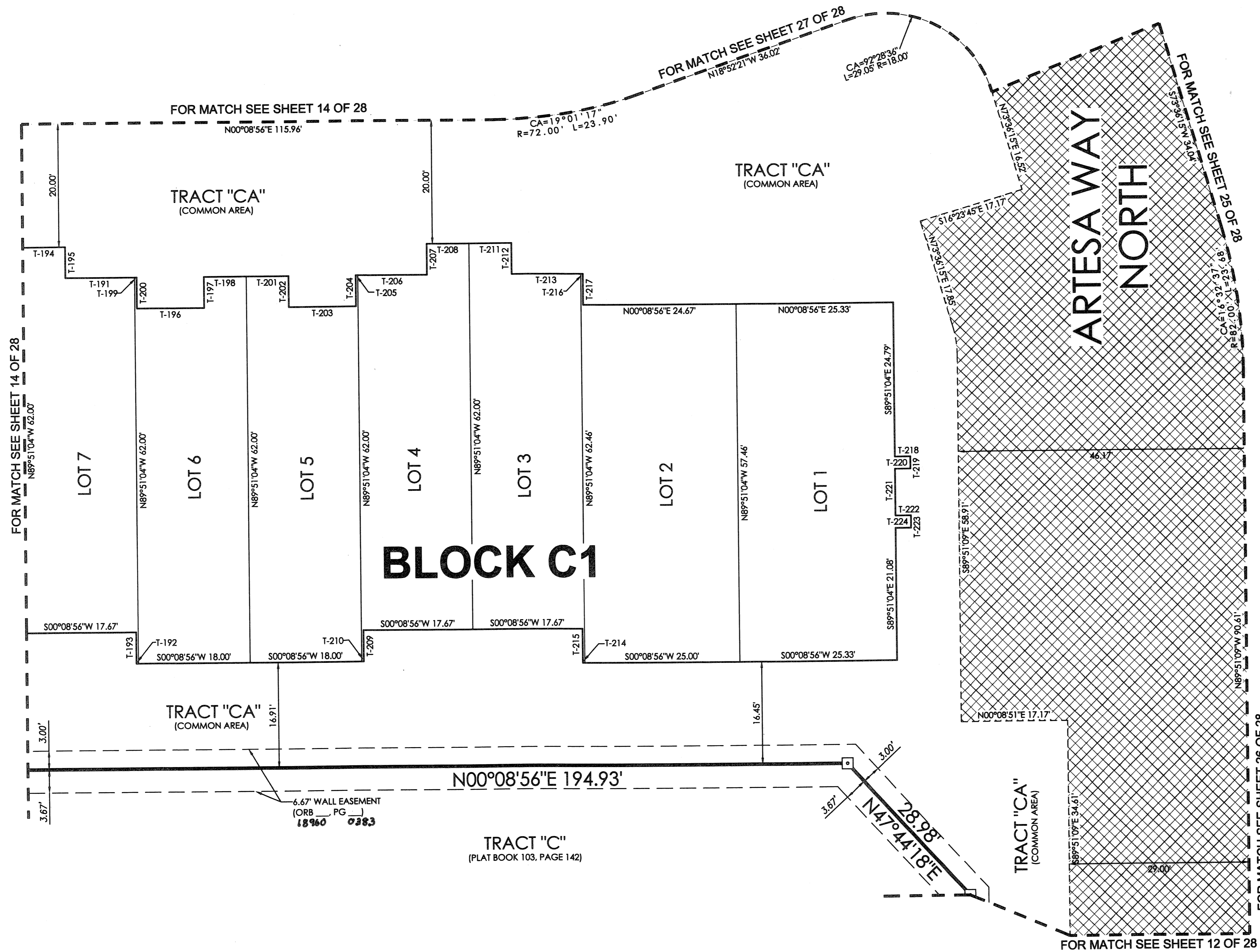
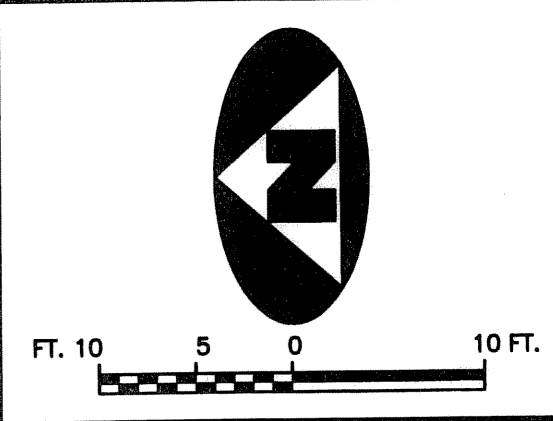


# CIELO TOWNHOMES AT THE SHOPS OF DONALD ROSS

BEING A REPLAT OF TRACT "R", THE SHOPS OF DONALD ROSS REPLAT OF TRACT "A", RECORDED IN PLAT BOOK 103, PAGE 142, PUBLIC RECORDS, PALM BEACH COUNTY, FLORIDA AND LYING IN THE NORTHWEST ONE-QUARTER OF SECTION 25, TOWNSHIP 41 SOUTH, RANGE 42 EAST, CITY OF PALM BEACH GARDENS, PALM BEACH COUNTY, FLORIDA.

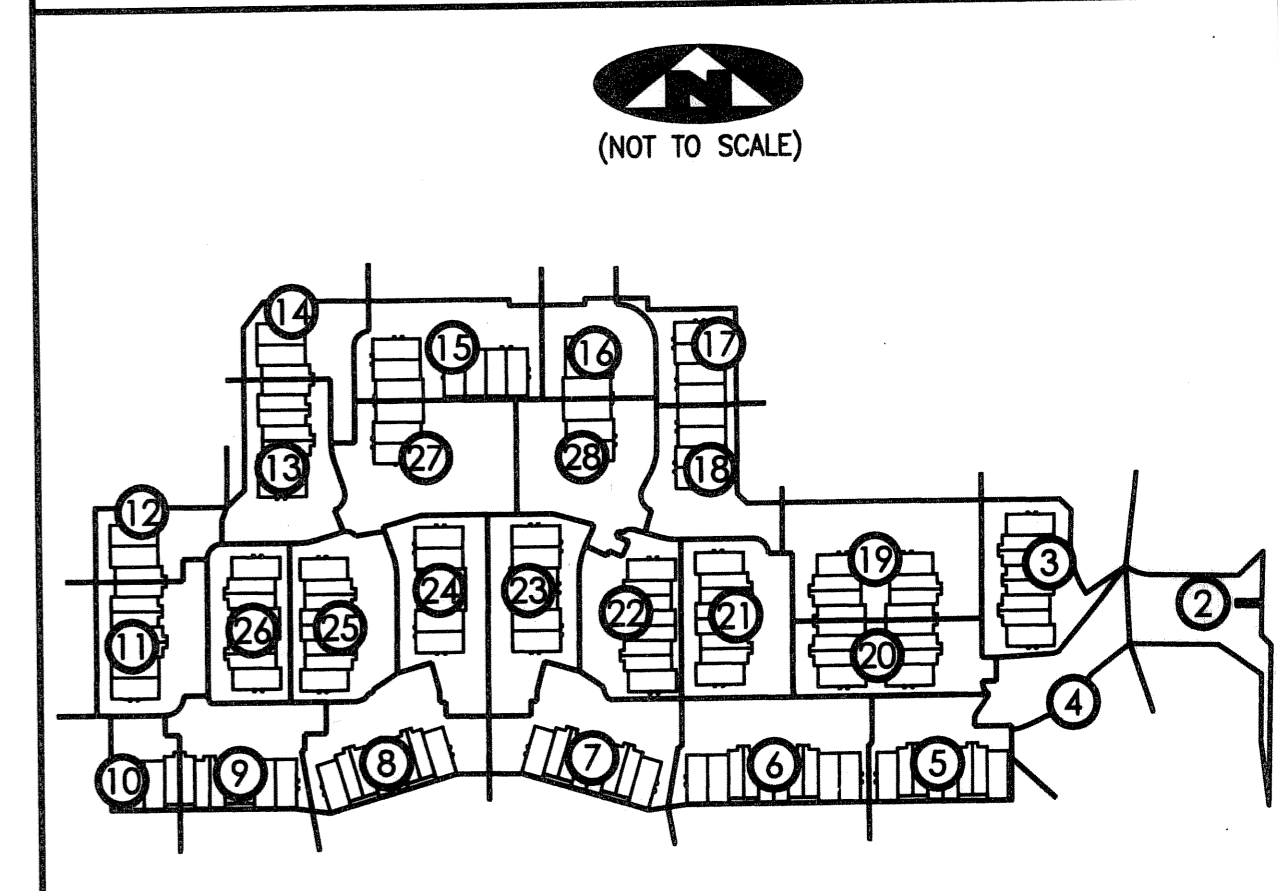
169



### TANGENT TABLE

T-191	N00°08'56"E 11.17'
T-192	S00°08'56"W 0.33'
T-193	N89°51'04"W 5.00'
T-194	N00°08'56"E 6.83'
T-195	S89°51'04"E 5.00'
T-196	N00°08'56"E 10.83'
T-197	N89°51'04"W 5.00'
T-198	N00°08'56"E 6.83'
T-199	N00°08'56"E 0.33'
T-200	S89°51'04"E 5.00'
T-201	N00°08'56"E 6.83'
T-202	S89°51'04"E 5.00'
T-203	N00°08'56"E 10.83'
T-204	N89°51'04"W 5.00'
T-205	N00°08'56"E 0.33'
T-206	N00°08'56"E 11.17'
T-207	N89°51'04"W 5.00'
T-208	N00°08'56"E 6.83'
T-209	S89°51'04"E 5.00'
T-210	S00°08'56"W 0.33'
T-211	N00°08'56"E 6.83'
T-212	S89°51'04"E 5.00'
T-213	N00°08'56"E 11.17'
T-214	S00°08'56"W 0.33'
T-215	N89°51'04"W 5.46'
T-216	N00°08'56"E 0.33'
T-217	S89°51'04"E 5.00'
T-218	N00°08'56"E 2.50'
T-219	S89°51'04"E 2.00'
T-220	S00°08'56"W 2.50'
T-221	S89°51'04"E 7.58'
T-222	N00°08'56"E 2.50'
T-223	S89°51'04"E 2.00'
T-224	S00°08'56"W 2.50'

### SHEET INDEX



1 = DENOTES SHEET NUMBER OF 28

### LEGEND

(R)	DENOTES A RADIAL LINE	R	DENOTES RADIUS DISTANCE	⊙	DENOTES A SET PERMANENT CONTROL POINT (LB 7344)	□	DENOTES A SET PERMANENT REFERENCE MONUMENT (LB 7344)
C/L	DENOTES A CENTERLINE	L	DENOTES ARC LENGTH DISTANCE (LB 7344)	⊙	DENOTES A FOUND PERMANENT REFERENCE MONUMENT (LB 2171)	■	DENOTES A FOUND PERMANENT REFERENCE MONUMENT (LB 2171)
DE	DENOTES DRAINAGE EASEMENT	CA	DENOTES CENTRAL ANGLE	⊙	DENOTES A SEACOAST UTILITY EASEMENT (ORB 17773, PAGE 469)	⊙	DENOTES AN INGRESS, EGRESS, DRAINAGE AND UTILITY EASEMENT (PB 103, PAGE 142)
SLIA	DENOTES SEACOAST UTILITY AUTHORITY	LCB	DENOTES LONG CHORD BEARING				
LS	DENOTES LIFT STATION EASEMENT	CHD	DENOTES CHORD DISTANCE				
EAE	DENOTES EMERGENCY ACCESS EASEMENT	ORB	DENOTES OFFICIAL RECORDS BOOK				
		PB	DENOTES PLAT BOOK				

### SURVEYOR'S NOTES

1. THE BASE BEARING, AS SHOWN HEREON, IS S01°22'08"W ALONG THE EAST LINE OF TRACT "R", THE SHOPS OF DONALD ROSS REPLAT OF TRACT "A", RECORDED IN PLAT BOOK 103, PAGE 142.
2. IN THOSE INSTANCES WHERE UTILITY OR DRAINAGE STRUCTURES ARE CONSTRUCTED IN CONFLICT WITH THE PLATTED PERMANENT CONTROL POINT POSITION STRADDLERS MONUMENTED AS PERMANENT CONTROL POINTS WILL BE SET TO REFERENCE THE PLATTED POSITION.
3. LINES THAT INTERSECT CURVES ARE NOT RADIAL UNLESS OTHERWISE NOTED.
4. THIS INSTRUMENT WAS PREPARED BY WM. R. VAN CAMPEN, P.S.M. NO. 2424, IN AND FOR THE OFFICES OF ASSOCIATED LAND SURVEYORS, INC., 4152 WEST BLUE HERON BOULEVARD, SUITE 121, RIVIERA BEACH, FLORIDA, 33404

FILE: CIELOPLT	
FB:	WO.NO.: P238
SCALE: 1"=10'	DATE: 12/25/2004
DWN: KVC	SHEET 13 OF 28

**ASSOCIATED LAND SURVEYORS, INC.**  
 4152 W. BLUE HERON BOULEVARD - SUITE 121  
 RIVIERA BEACH FLORIDA 33404 LB NO. 7344  
 PHONE: (561) 848-2102 FAX: (561) 844-9659 EMAIL: ALLSURVEY@AOL.COM